

The Lismore

3 bedroom semi-detached or terraced villa



The Lismore is a good sized semi-detached or terraced family home. This well planned layout offers excellent accommodation.

The living room has the added advantage of French doors to the garden. A well-equipped kitchen/breakfast room, cupboard and cloakroom complete the ground floor.

On the first floor, there are three good-sized bedrooms, all with a wardrobe. A family bathroom completes this floor.



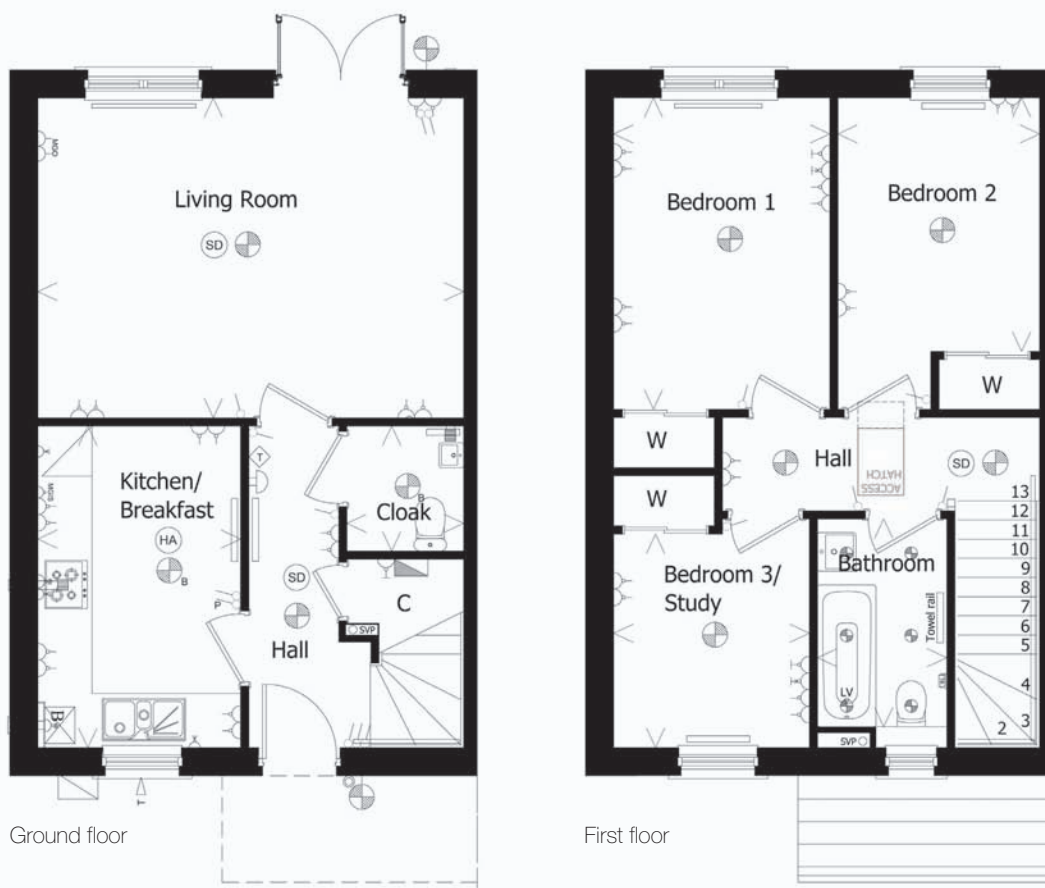
The illustration represents a typical elevation treatment of this housetype. Please ask the Sales Consultant on the development to ascertain the treatment of individual plots. (June 2013)

Hand-crafted homes for generations

The Lismore

	mm	feet, inches
Lounge	5116 x 3839	16'9" x 12'7"
Kitchen	2435 x 3861	8'0" x 12'8"
Cloak	1400 x 1500	4'7" x 4'11"
Bedroom 1	2595 x 3737	8'6" x 12'3"
Bedroom 2	2421 x 3042	7'11" x 10'0"
Bedroom 3/Study	2350 x 2563	7'9" x 8'5"
Bathroom	2495 x 1550	5'1" x 8'2"

Dimensions taken at the position of arrows



- | | | | |
|-------------------------------|---|---------------------|------------------|
| ● Doorbell | ⊕ Light | ⊙ Smoke detector | ◇ Thermostat |
| ⚡ Double 13 amp socket outlet | ☎ Telephone socket | — Radiator | LV Light Vent |
| ⚡ Single 13 amp socket outlet | ⚡ Fused spur 13amp appliance connection | ▭ Consumer board | ⊕ External light |
| ⚡ Light switch | ☎ TV aerial socket | ⊠ Boiler | ⊙ Heat Alarm |
| | ⚡ External tap | ⊙ Multi Gang Outlet | |

The particulars, prices, illustrations and plans in this brochure are intended to give a fair description of the property but their accuracy is not guaranteed and they do not form part of any contract. Mactaggart & Mickel Homes reserve the right to alter prices and equipment as necessary.