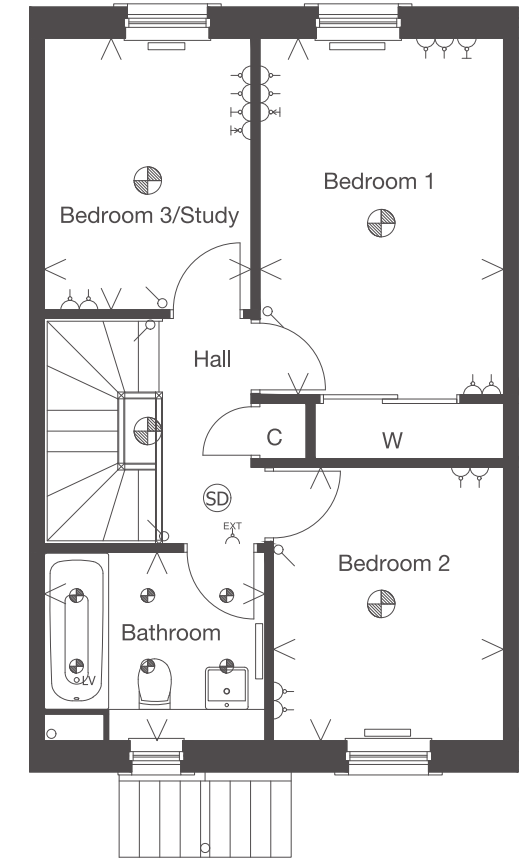
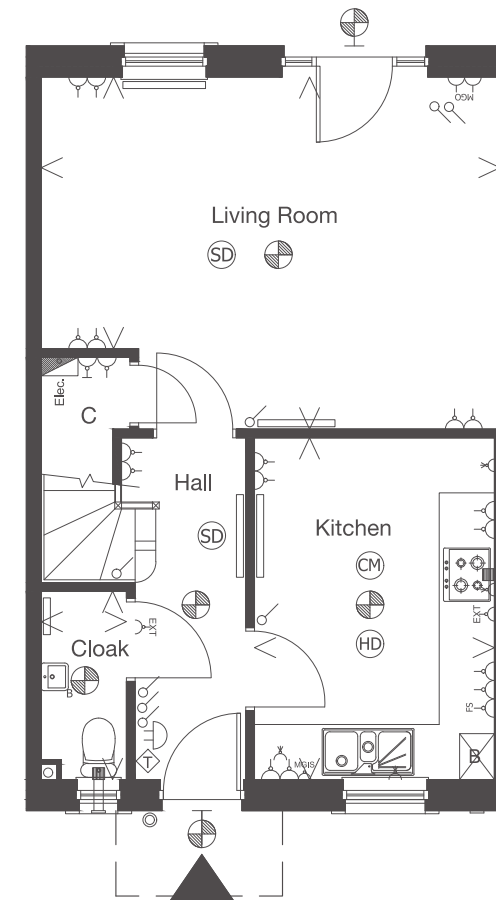


THE LISMORE 3 bedroom semi detached or terraced villa

Plots 5, 6, 7, 8, 13, 14, 15, 16, 17, 18, 43, 44, 49, 50, 79, 80, 94, 95

Refer to page 9 for key to floor plan symbols. Dimensions taken at the position of the arrows.



GROUND FLOOR	mm	feet, inches
Lounge	4996 x 2955 / 3830	16'5" x 9'8" / 12'7"
Kitchen	2612 x 3720	8'7" x 12'2"
Cloak	926 x 2050	3'0" x 6'9"

FIRST FLOOR	mm	feet, inches
Bedroom 1	2651 x 3880	8'8" x 12'9"
Bedroom 2	2501 x 2975	8'2" x 9'9"
Bedroom 3 / Study	2250 x 2955	7'5" x 9'8"
Bathroom	2400 x 2050	7'10" x 6'9"

The external and internal images above are of a typical version of this house type, the specification depicted may vary to that in the version of this house type at Millerhill. Some internal images contain upgrades to fixtures, fittings and appliances and these may not be included in the sale price. Please ask your Sales Consultant for the full details of the specification and pricing.