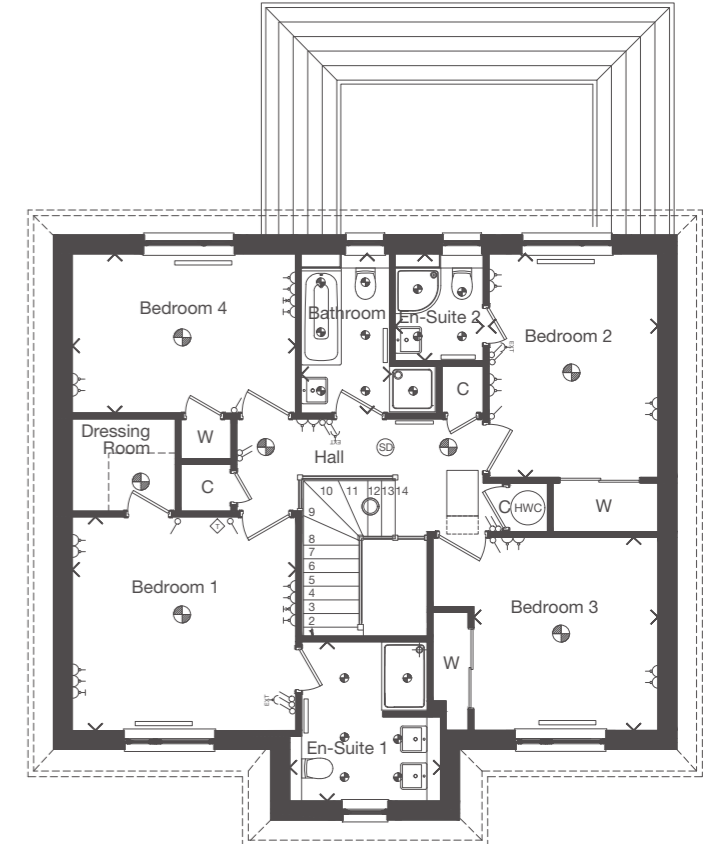
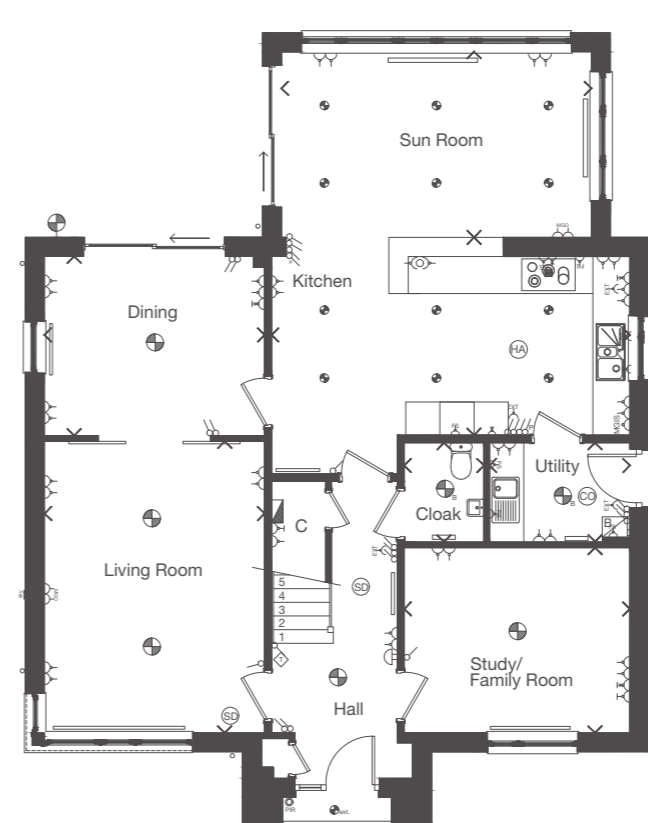


Plots 55, 61, 76, 77, 79, 92, 104

Dimensions taken at the position of the arrows.

The Master of Works to the Crown of Scotland was responsible for the construction and repair of royal palaces and castles. William Schaw was an early holder to this office, while later holders filled a role similar to that of architects in the modern sense.



GROUND FLOOR	mm	feet, inches
Living Room	3865 x 5116	12'8" x 16'9"
Dining	3865 x 3149	12'8" x 10'4"
Kitchen	6288 x 3471	20'8" x 11'5"
Sun Room	5441 x 3259	17'10" x 10'8"
Utility	2462 x 1741	8'1" x 5'9"
Cloak	1398 x 1741	4'7" x 5'9"
Study/Family	3959 x 3249	12'12" x 10'8"

FIRST FLOOR	mm	feet, inches
Bedroom 1	3924 x 3750	12'10" x 12'4"
En-Suite 1	2648 x 2794	8'8" x 9'2"
Bedroom 2	2966 x 3923	9'9" x 12'10"
En-Suite 2	1545 x 1872	5'1" x 6'2"
Bedroom 3	3231 x 3388	10'7" x 11'1"
Bedroom 4	3919 x 2796	12'10" x 9'2"
Bathroom	1547 x 2796	5'1" x 9'2"

Legend

- Doorbell
- ⊕ Light
- ☼ Carbon Monoxide Detector
- ⚡ Light switch
- ⏻ Consumer board
- ⬡ Thermostat
- ⚡ Smoke detector
- ⚡ Double 13 amp socket outlet
- ☎ Telephone socket
- 📺 TV aerial socket
- 🔥 Boiler
- ⚡ LV Light Vent
- 🔥 Radiator
- ⚡ Single 13 amp socket outlet
- ⚡ Fused spur 13amp appliance connection
- ↔ External tap
- 🔌 Multi Gang Outlet
- ⊕ External light
- 🔥 Heat Detector

The external and internal images above are of a typical version of this house type, the specification depicted may vary to that in the version of this house type at Castle Grove North. Some internal images contain upgrades to fixtures, fittings and appliances and these may not be included in the sale price. Please ask your Sales Consultant for the full details of the specification and pricing.