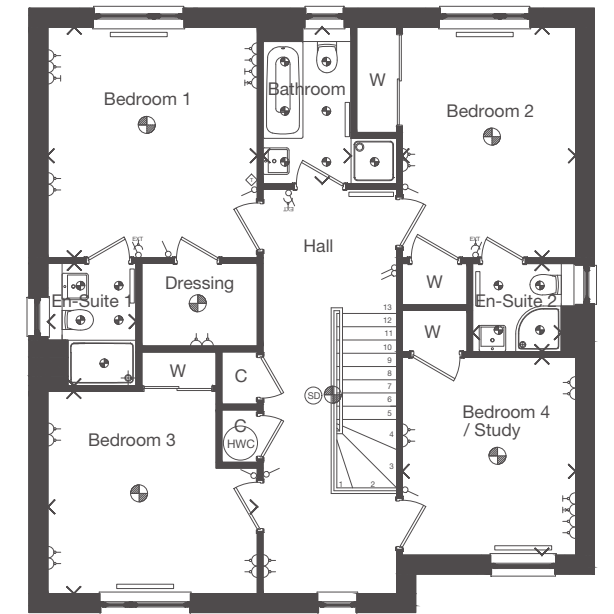
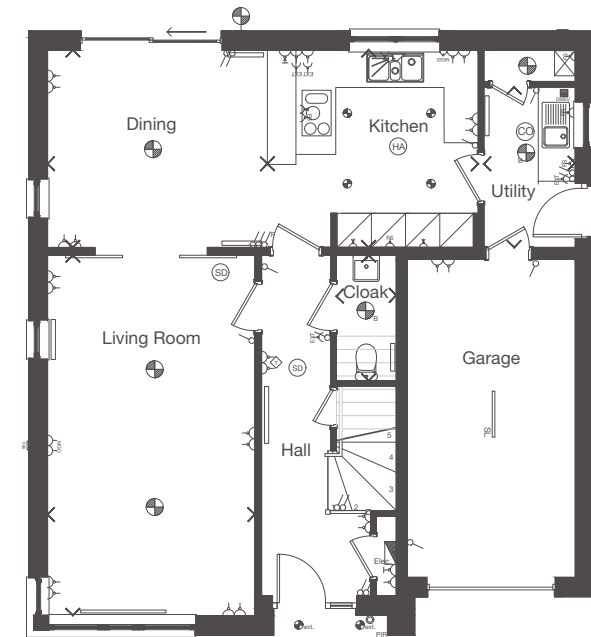


**THE MILLER** 4 bedroom detached villa with single garage

Plots 44, 45, 46, 47, 50, 52, 56, 57, 58, 63, 65, 66, 72, 73, 83, 84, 85, 88, 94, 95, 107, 108, 109, 110, 112

Refer to Page 11 for key to floor plan symbols.  
Dimensions taken at the position of the arrows.

James Miller was recognised for his commercial architecture in Glasgow and for his Scottish railway stations, particularly his extensions to Glasgow Central and Wemyss Bay railway stations.



GROUND FLOOR	mm	feet, inches
Living Room	3639 x 6327	11'11" x 20'9"
Kitchen	3700 x 3457	12'2" x 11'4"
Dining	3861 x 3457	12'8" x 11'4"
Utility	1604 x 2812	5'3" x 9'3"
Cloak	1050 x 2203	3'5" x 7'3"

FIRST FLOOR	mm	feet, inches
Bedroom 1	3678 x 4045	12'1" x 13'3"
En-Suite 1	1550 x 2148	5'1" x 7'1"
Bedroom 2	3042 x 4048	10'0" x 13'3"
En-Suite 2	1557 x 1545	5'1" x 5'1"
Bedroom 3	3678 x 3548	12'1" x 11'8"
Bedroom 4	3042 x 3472	10'0" x 11'5"
Bathroom	1545 x 2748	5'1" x 9'0"

The external and internal images above are of a typical version of this house type, the specification depicted may vary to that in the version of this house type at Castle Grove North. Some internal images contain upgrades to fixtures, fittings and appliances and these may not be included in the sale price. Please ask your Sales Consultant for the full details of the specification and pricing.