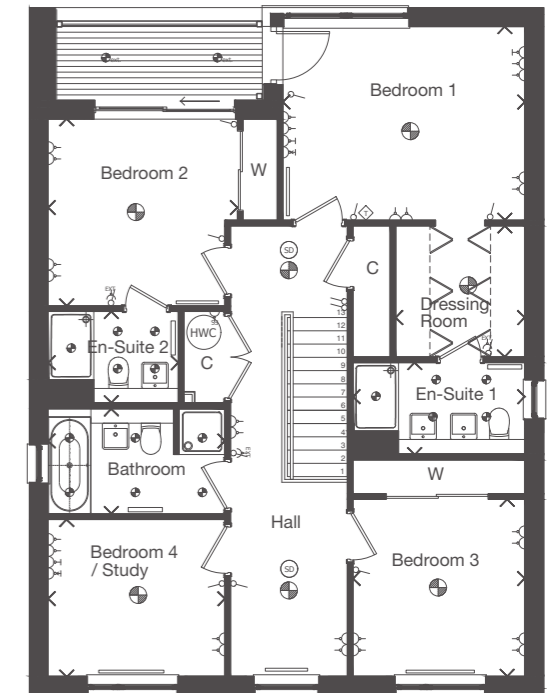
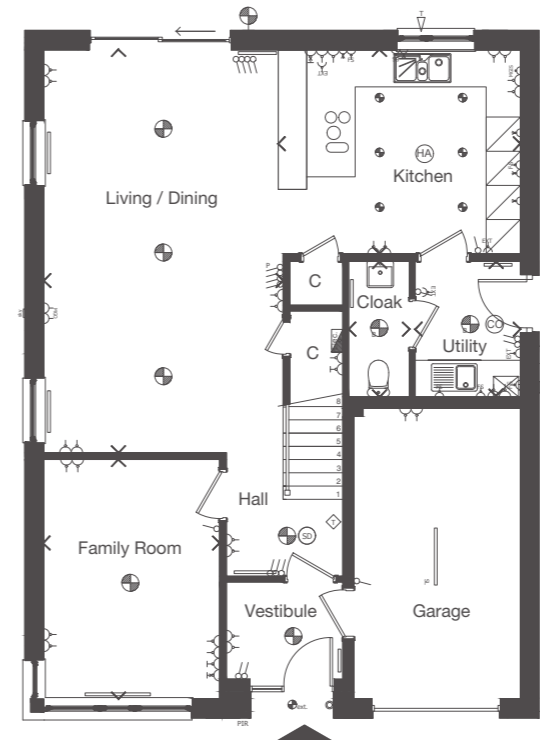


Plots 39, 69, 86, 98, 99, 101

Refer to Page 11 for key to floor plan symbols.  
Dimensions taken at the position of the arrows.

James MacLaren, who associated with the Arts and Crafts movement and Scottish Vernacular architecture, was a significant influence on Charles Rennie Mackintosh.



GROUND FLOOR	mm	feet, inches
Living / Dining	4200 x 7070	13'9" x 23'2"
Kitchen	4250 x 3576	13'11" x 11'9"
Family Room	3086 x 4205	10'1" x 13'10"
Cloak	1069 x 2376	3'6" x 7'10"
Utility	1846 x 2376	6'1" x 7'10"

FIRST FLOOR	mm	feet, inches
Bedroom 1	4245 x 3397	13'11" x 11'2"
Dressing Room	2265 x 2300	7'5" x 7'7"
En-Suite 1	3015 x 1600	9'11" x 5'3"
Bedroom 2	3320 x 3276	10'11" x 10'9"
En-Suite 2	2282 x 1600	7'6" x 5'3"
Bedroom 3	3015 x 3105	9'11" x 10'2"
Bedroom 4 / Study	3101 x 2751	10'2" x 9'0"
Bathroom	3100 x 1841	10'2" x 6'0"

The external and internal images above are of a typical version of this house type, the specification depicted may vary to that in the version of this house type at Castle Grove North. Some internal images contain upgrades to fixtures, fittings and appliances and these may not be included in the sale price. Please ask your Sales Consultant for the full details of the specification and pricing.