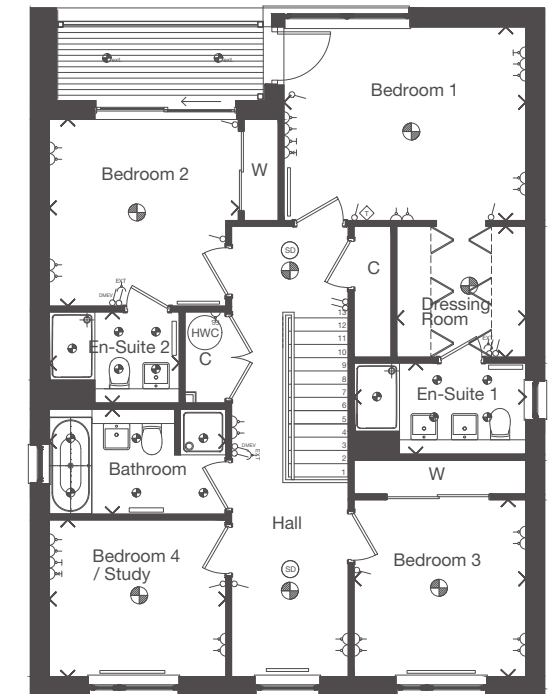
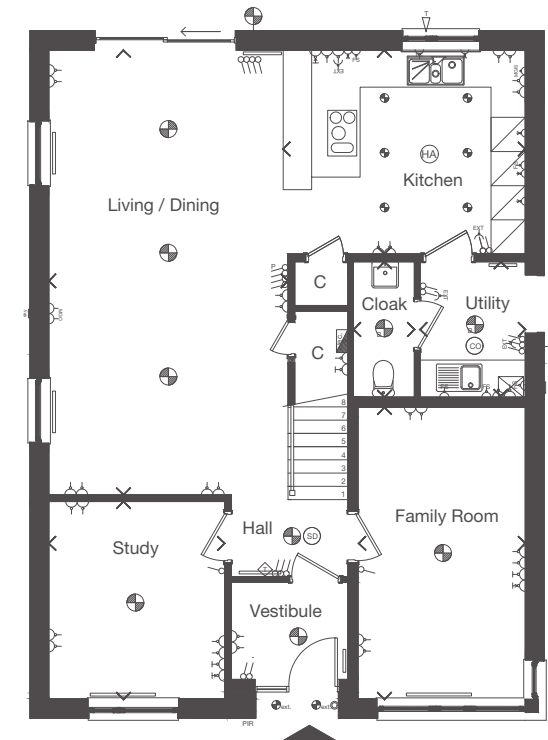




Plots 38, 40, 42, 43, 48, 49, 68, 74, 75, 81, 82, 90, 91, 93, 103, 106

Alexander 'Greek' Thomson was an architectural theorist and pioneer in sustainable building. Little appreciated in his lifetime, his critical reputation revived after his death. He produced a diverse range of structures including villas, a castle, urban terraces, tenements and three extraordinary churches.

Refer to Page 11 for key to floor plan symbols. Dimensions taken at the position of the arrows.



GROUND FLOOR	mm	feet, inches
Family	2936 x 5125	9'8" x 16'10"
Living / Dining	4200 x 7804	13'9" x 25'7"
Kitchen	4250 x 3576	13'11" x 11'9"
Study	3086 x 3462	10'1" x 11'4"
Cloak	1069 x 2376	3'6" x 7'10"
Utility	1846 x 2376	6'1" x 7'10"

FIRST FLOOR	mm	feet, inches
Bedroom 1	4245 x 3397	13'11" x 11'2"
En-Suite 1	3015 x 1600	9'11" x 5'3"
Dressing	2265 x 2300	7'5" x 7'7"
Bedroom 2	3320 x 3276	10'11" x 10'9"
En-Suite 2	2282 x 1600	7'6" x 5'3"
Bedroom 3	3015 x 3105	9'11" x 10'2"
Bedroom 4 / Study	3101 x 2751	10'2" x 9'0"
Bathroom	3101 x 1841	10'2" x 6'0"



The external and internal images above are of a typical version of this house type, the specification depicted may vary to that in the version of this house type at Castle Grove North. Some internal images contain upgrades to fixtures, fittings and appliances and these may not be included in the sale price. Please ask your Sales Consultant for the full details of the specification and pricing.