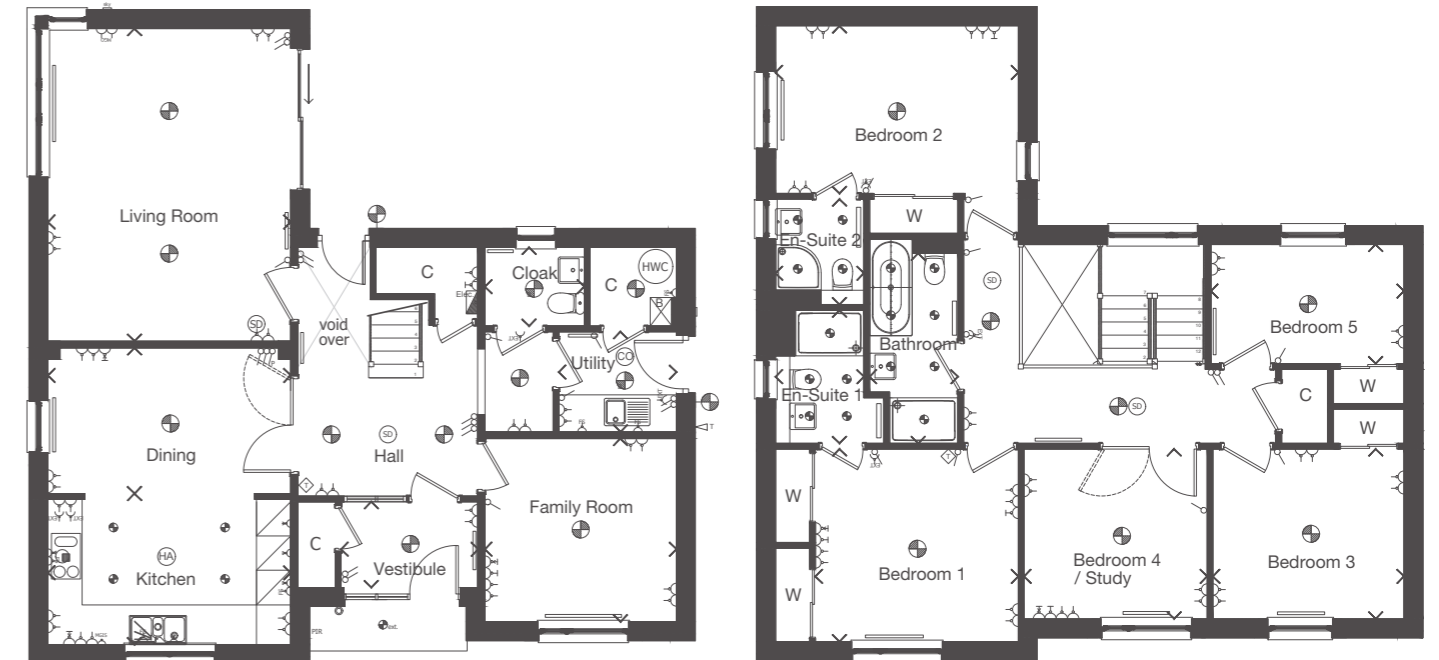


Plots 71, 97, 100

Refer to Page 11 for key to floor plan symbols.
Dimensions taken at the position of the arrows.

William Elliot was an accomplished mathematician and astronomer. He acted as both architect and builder and he designed several country houses in the Scottish Borders.



GROUND FLOOR	mm	feet, inches
Living Room	4260 x 5486	14'0" x 18'0"
Dining Room	4260 x 2556	14'0" x 8'5"
Kitchen	4260 x 2650	14'0" x 8'8"
Utility	2064 x 1757	6'9" x 5'9"
Family Room	3360 x 3215	11'0" x 10'7"
Cloak	1742 x 1380	5'9" x 4'6"

FIRST FLOOR	mm	feet, inches
Bedroom 1	3560 x 3380	11'8" x 11'1"
En-Suite 1	1550 x 2336	5'1" x 7'8"
Bedroom 2	4260 x 2944	14'0" x 9'8"
En-Suite 2	1550 x 1850	5'1" x 6'1"
Bedroom 3	3355 x 2980	11'0" x 9'9"
Bedroom 4 / Study	3215 x 2980	10'7" x 9'9"
Bedroom 5	3388 x 2090	11'1" x 6'10"
Bathroom	1550 x 3336	5'1" x 10'11"



The external and internal images above are of a typical version of this house type, the specification depicted may vary to that in the version of this house type at Castle Grove North. Some internal images contain upgrades to fixtures, fittings and appliances and these may not be included in the sale price. Please ask your Sales Consultant for the full details of the specification and pricing.