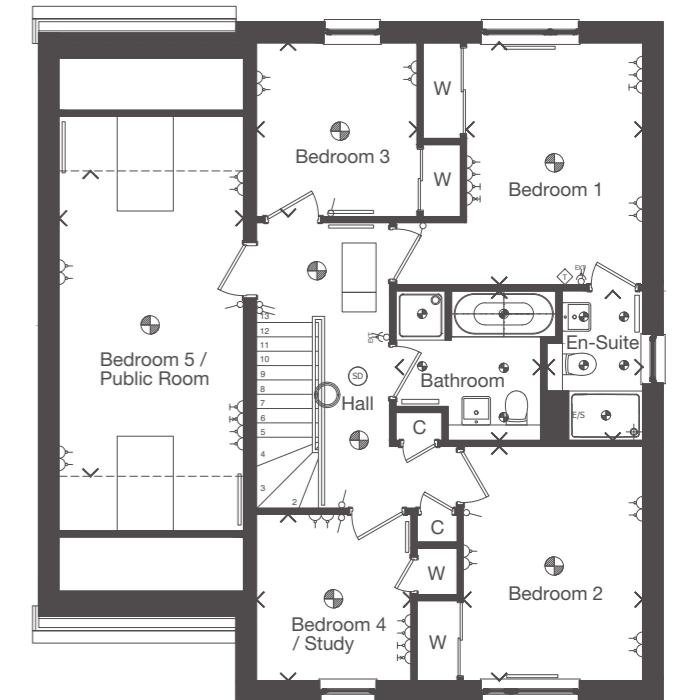
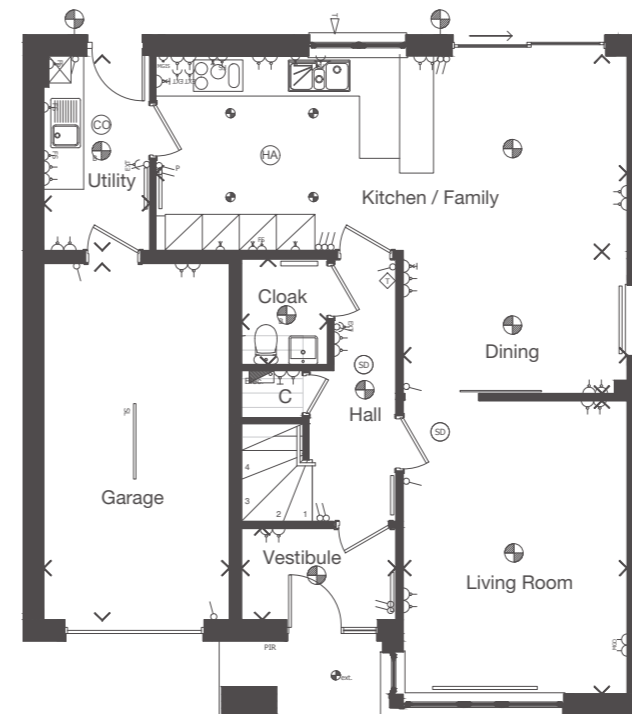


Plots 41, 53, 54, 67, 87, 89, 96, 102, 111

Refer to Page 11 for key to floor plan symbols.  
Dimensions taken at the position of the arrows.

William Adam, architect and entrepreneur, is best known for Hopetoun House near Edinburgh and Duff House Banff, in addition to numerous country houses and public buildings.



GROUND FLOOR	mm	feet, inches
Living Room	3630 x 4753	11'11" x 15'7"
Kitchen / Family	7637 x 3153	25'1" x 10'4"
Dining	3630 x 2318	11'11" x 7'7"
Utility	1722 x 3153	5'8" x 10'4"
Cloak	1400 x 1711	4'7" x 5'7"

FIRST FLOOR	mm	feet, inches
Bedroom 1	2855 x 3921	9'4" x 12'10"
En-Suite 1	1550 x 2425	5'1" x 7'11"
Bedroom 2	2905 x 3796	9'6" x 12'5"
Bedroom 3	2605 x 2816	8'7" x 9'3"
Bedroom 4 / Study	2505 x 2696	8'3" x 8'10"
Bedroom 5 / Public	2987 x 4951	9'10" x 16'3"
Bathroom	2350 x 2425	7'9" x 7'11"



The external and internal images above are of a typical version of this house type, the specification depicted may vary to that in the version of this house type at Castle Grove North. Some internal images contain upgrades to fixtures, fittings and appliances and these may not be included in the sale price. Please ask your Sales Consultant for the full details of the specification and pricing.