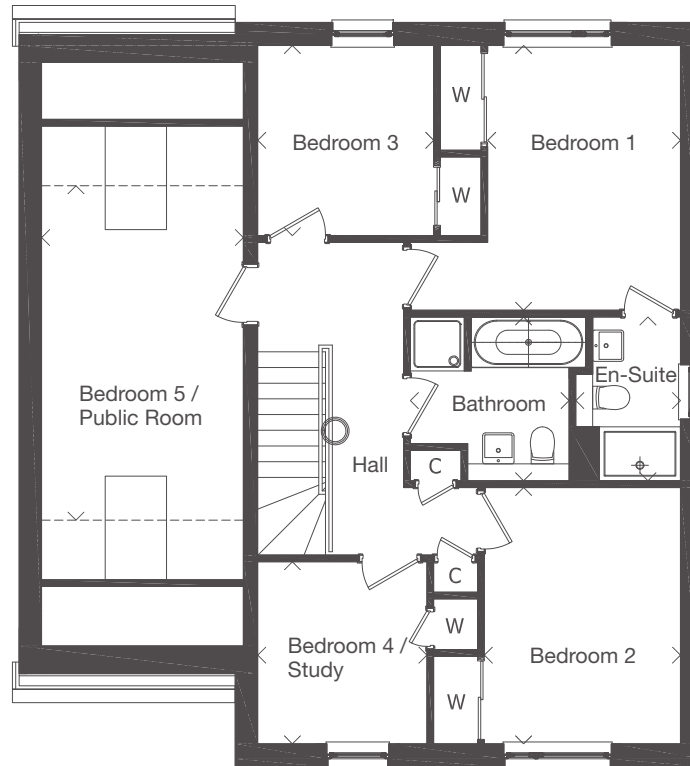
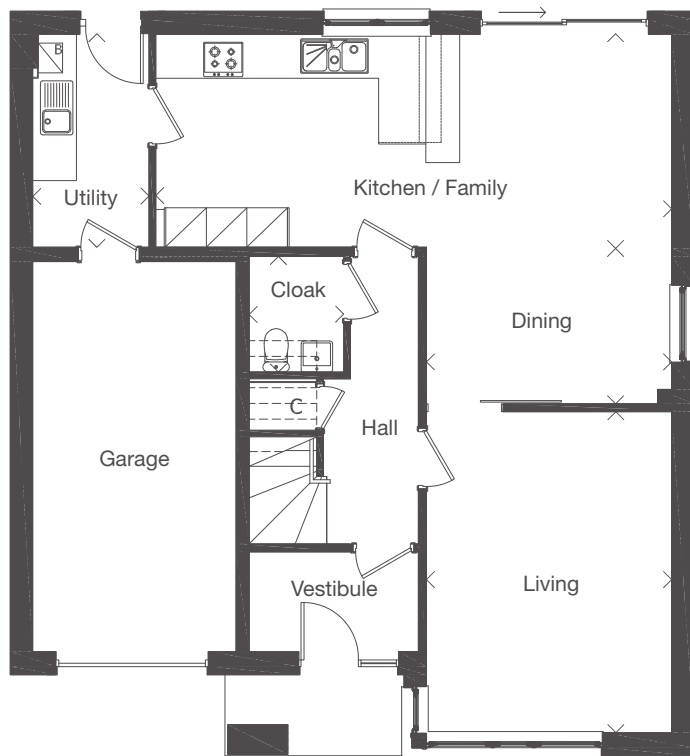


Plots 5, 10, 11, 26, 27, 40, 42

Dimensions taken at the position of the arrows.



GROUND FLOOR	mm	feet, inches
Living	3630 x 4750	11'11" x 15'7"
Kitchen / Family	7635 x 3150	25'1" x 10'4"
Dining	3630 x 2315	11'11" x 7'7"
Utility	1720 x 3150	5'8" x 10'4"
Cloak	1400 x 1710	4'7" x 5'7"

FIRST FLOOR	mm	feet, inches
Bedroom 1	2855 x 3920	9'4" x 12'10"
En-suite	1550 x 2425	5'1" x 7'11"
Bedroom 2	2905 x 3795	9'6" x 12'5"
Bedroom 3	2605 x 2815	8'7" x 9'3"
Bedroom 4 / Study	2505 x 2695	8'3" x 8'10"
Bedroom 5 / Public Room	2985 x 4950	9'10" x 16'3"
Bathroom	2350 x 2425	7'9" x 7'11"

The indicative external and internal images shown are of a typical version of this house type, the specification depicted may vary to that in the version of this house type at Midton Fields. Some internal images contain upgrades to fixtures, fittings and appliances and these may not be included in the sale price. Dimensions taken at the position of the arrows. Please ask your Sales Consultant for the full details of the specification and pricing.

The particulars, prices, illustrations and plans in this brochure are intended to give a fair description of the properties but their accuracy is not guaranteed and they do not form part of any contract. Mactaggart & Mickel Homes reserve the right to alter prices, specifications and equipment as necessary.