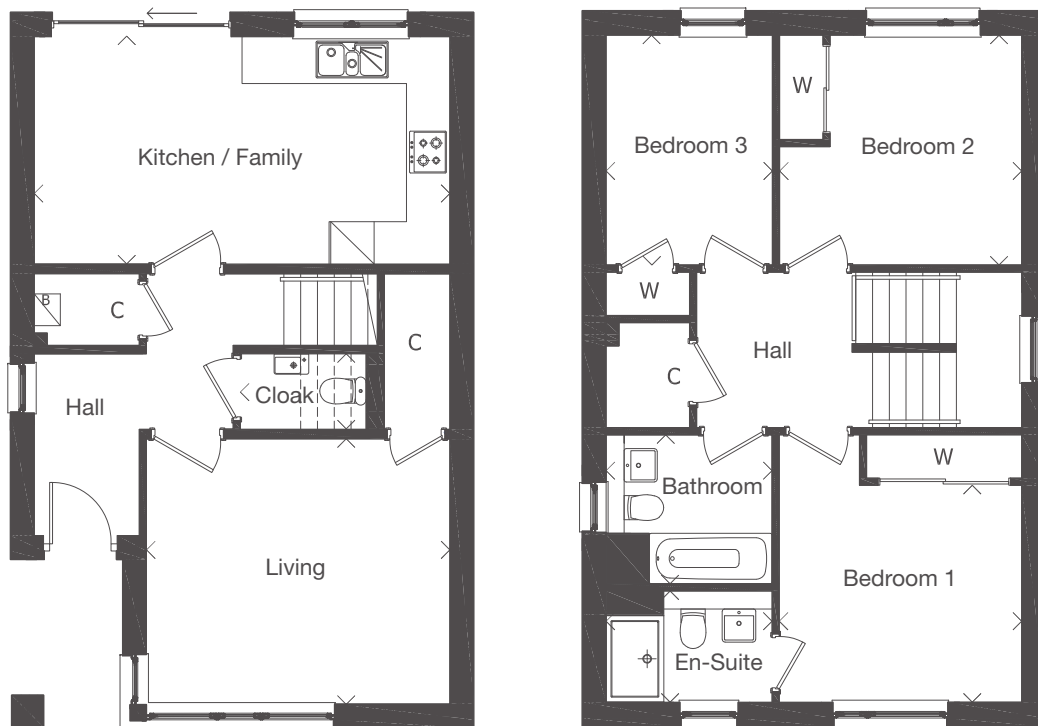


Plots 15, 16, 23, 24, 29, 30, 35, 36, 37, 38, 41, 43, 46. Plots 17, 18 (semi-detached)

Dimensions taken at the position of the arrows.



GROUND FLOOR	mm	feet, inches
Living	4205 x 3665	13'10" x 12'0"
Cloak	1740 x 1045	5'9" x 3'5"
Kitchen/Family	5760 x 3145	18'11" x 10'4"
FIRST FLOOR	mm	feet, inches
Bedroom 1	3360 x 3005	11'0" x 9'10"
En-suite	2300 x 1540	7'7" x 5'1"
Bathroom	2300 x 2065	7'7" x 6'9"
Bedroom 2	3355 x 3185	11'0" x 10'5"
Bedroom 3	2305 x 3185	7'7" x 10'5"

The indicative external and internal images shown are of a typical version of this house type, the specification depicted may vary to that in the version of this house type at Midton Fields. Some internal images contain upgrades to fixtures, fittings and appliances and these may not be included in the sale price. Dimensions taken at the position of the arrows. Please ask your Sales Consultant for the full details of the specification and pricing.

The particulars, prices, illustrations and plans in this brochure are intended to give a fair description of the properties but their accuracy is not guaranteed and they do not form part of any contract. Mactaggart & Mickel Homes reserve the right to alter prices, specifications and equipment as necessary.