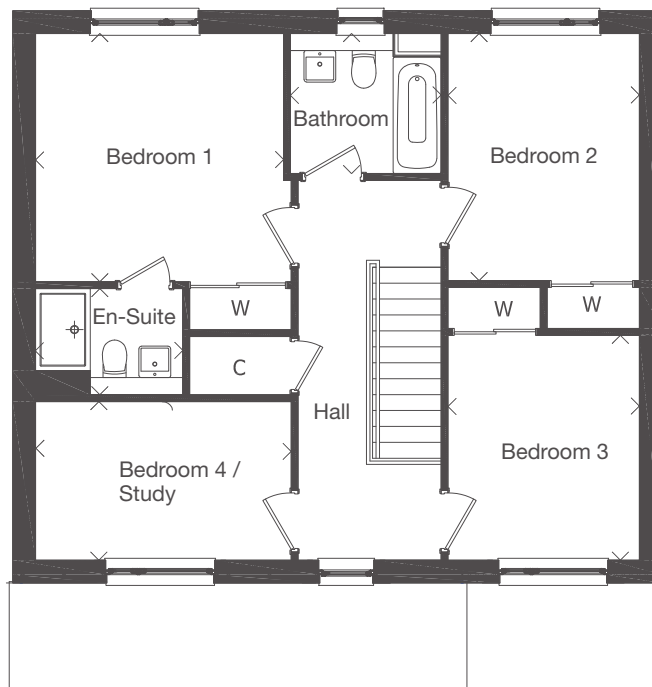
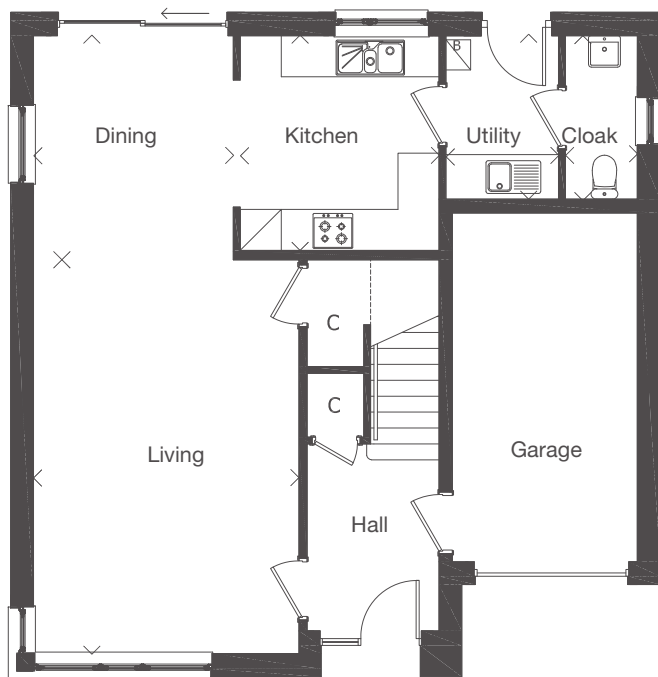


Plots 12, 13, 14, 21, 22, 28, 47

Dimensions taken at the position of the arrows.



GROUND FLOOR	mm	feet, inches
Living	3875 x 5745	12'9" x 18'10"
Kitchen	2900 x 3135	9'6" x 10'3"
Dining	2915 x 3270	9'7" x 10'9"
Utility	1640 x 2385	5'5" x 7'10"
Cloak	1050 x 2385	3'5" x 7'10"

FIRST FLOOR	mm	feet, inches
Bedroom 1	3620 x 3620	11'11" x 11'11"
En-suite	2150 x 1550	7'1" x 5'1"
Bathroom	2200 x 2045	7'3" x 6'9"
Bedroom 2	2790 x 3605	9'2" x 11'10"
Bedroom 3	2790 x 3280	9'2" x 10'9"
Bedroom 4 / Study	3730 x 2315	12'3" x 7'7"

The indicative external and internal images shown are of a typical version of this house type, the specification depicted may vary to that in the version of this house type at Midton Fields. Some internal images contain upgrades to fixtures, fittings and appliances and these may not be included in the sale price. Dimensions taken at the position of the arrows. Please ask your Sales Consultant for the full details of the specification and pricing.

The particulars, prices, illustrations and plans in this brochure are intended to give a fair description of the properties but their accuracy is not guaranteed and they do not form part of any contract. Mactaggart & Mickel Homes reserve the right to alter prices, specifications and equipment as necessary.

