

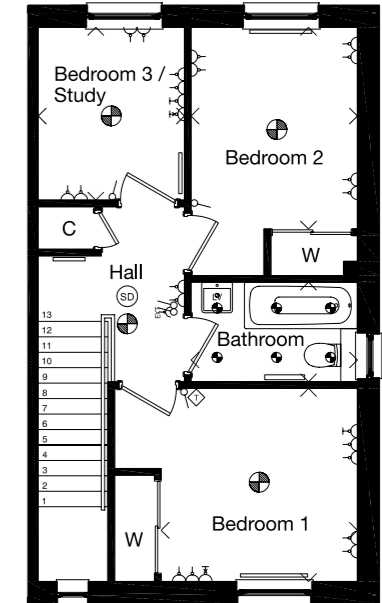
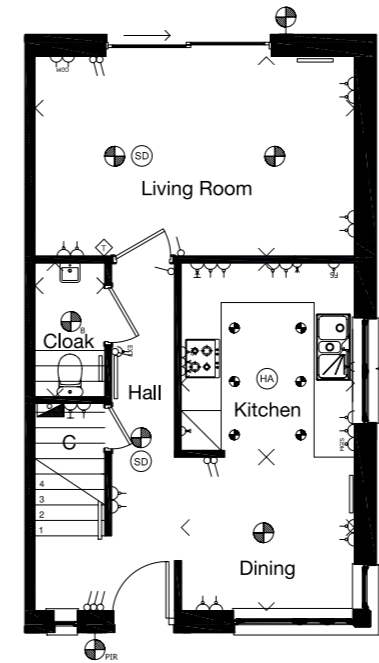
THE HUGHES 3 bedroom semi-detached villa with private driveway



Edith Hughes is considered to be one of Britain's first practising woman architect. She established her firm in 1920 and during the 1950s and 60s worked on St Mary's Episcopal Cathedral and Music School, Edinburgh

Plots 12, 13, 15, 16, 25, 26, 49, 50, 53, 54, 64, 65, 68, 69

Refer to Page 9 for key to floor plan symbols. Dimensions taken at the position of the arrows.



GROUND FLOOR	mm	feet, inches
Living Room	4804 x 2978	15'9" x 9'9"
Kitchen / Breakfast	2602 x 2925	8'6" x 9'7"
Dining	2602 x 2301	8'6" x 7'7"
Cloak	1050 x 2018	3'5" x 6'7"

FIRST FLOOR	mm	feet, inches
Bedroom 1	2954 x 2905	9'8" x 9'6"
Bedroom 2	2504 x 3035	8'3" x 9'11"
Bedroom 3	2200 x 2600	7'3" x 8'6"
Bathroom	2504 x 1500	8'3" x 4'11"

The external and internal images above are of a typical version of this house type, the specification depicted may vary to that in the version of this house type at Greenan Views, Doonfoot. Some internal images contain upgrades to fixtures, fittings and appliances and these are not included in the sale price. Please ask your Sales Consultant for the full details of the specification and pricing