

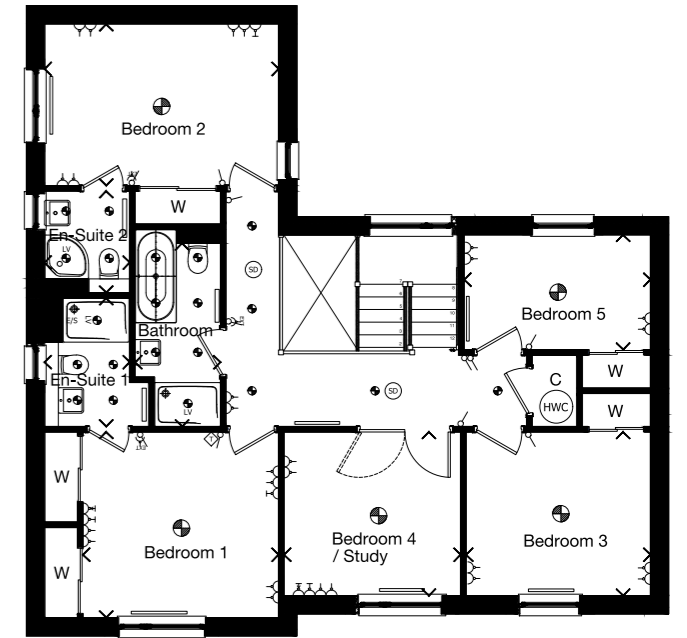
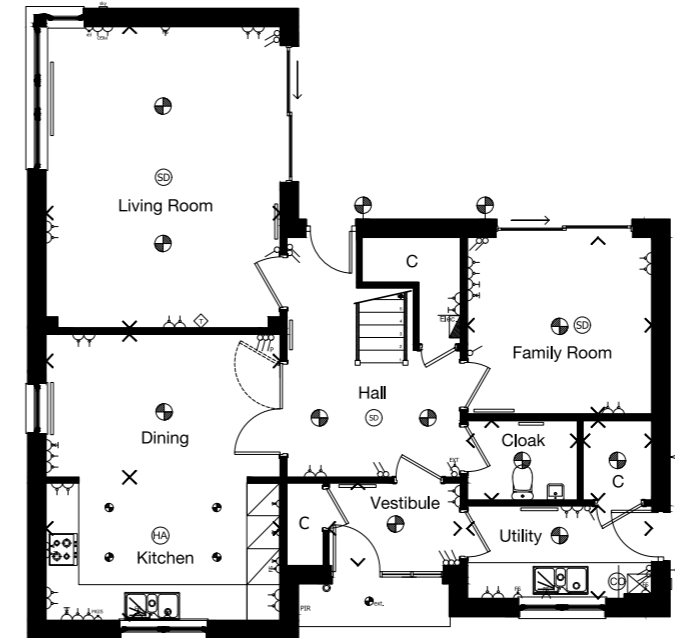
THE TAIT 5 bedroom detached villa with detached double garage



Plot 61

Thomas Tait worked in Art Deco and Streamline Moderne styles, notably St Andrew's House (HQ of Scottish Government) and the pylons for Sydney Harbour Bridge.

Refer to Page 9 for key to floor plan symbols. Dimensions taken at the position of the arrows.



GROUND FLOOR	mm	feet, inches
Living Room	4260 x 5486	14'0" x 18'0"
Dining Room	4260 x 2601	14'0" x 8'6"
Kitchen	4260 x 2605	14'0" x 8'7"
Utility	3360 x 1687	11'0" x 5'6"
Family Room	3360 x 3233	11'0" x 10'7"
Cloak	2005 x 1450	6'7" x 4'9"

FIRST FLOOR	mm	feet, inches
Bedroom 1	3560 x 3380	11'8" x 11'1"
En-Suite 1	1550 x 2336	5'1" x 7'8"
Bedroom 2	4260 x 2944	14'0" x 9'8"
En-Suite 2	1550 x 1850	5'1" x 6'1"
Bedroom 3	3355 x 2980	11'0" x 9'9"
Bedroom 4 / Study	3215 x 2980	10'7" x 9'9"
Bedroom 5	3388 x 2090	11'1" x 6'10"
Bathroom	1550 x 3336	5'1" x 10'11"

The external and internal images above are of a typical version of this house type, the specification depicted may vary to that in the version of this house type at Greenan Views, Doonfoot. Some internal images contain upgrades to fixtures, fittings and appliances and these are not included in the sale price. Please ask your Sales Consultant for the full details of the specification and pricing.