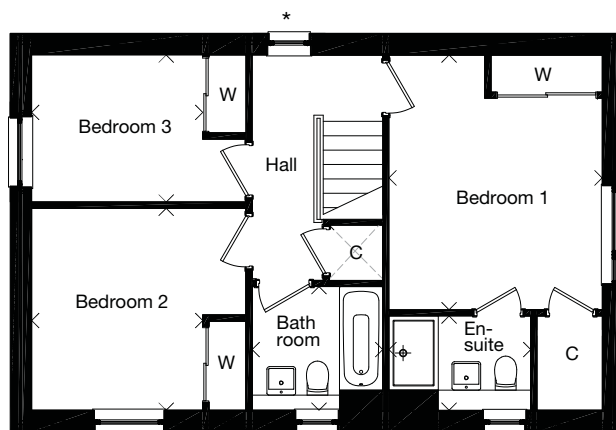
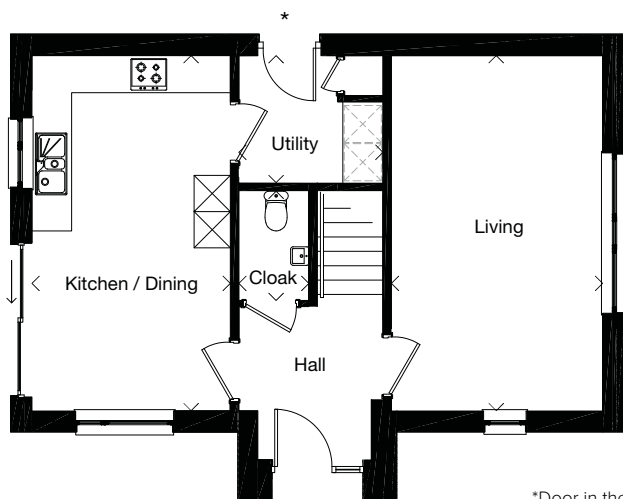


Plots 3, 8, 9, 14, 17, 20, 33

Dimensions taken at the position of the arrows.



\*Door in the utility and hall window not present in the semi-detached configuration.

GROUND FLOOR	mm	feet, inches
Living	5745 x 3415	18'10" x 11'2"
Cloak	1770 x 1130	5'10" x 3'8"
Kitchen / Family	5745 x 3210	18'10" x 10'6"
Utility	2330 x 2055	7'8" x 6'9"

FIRST FLOOR	mm	feet, inches
Bedroom 1	4120 x 3455	13'6" x 11'4"
En-Suite	2295 x 1525	7'6" x 5'0"
Bathroom	2110 x 2000	6'11" x 6'7"
Bedroom 2	3265 x 2765	10'9" x 9'1"
Bedroom 3	2765 x 2380	9'1" x 7'10"

Computer-generated image of a typical Mactaggart & Mickel house style at one of our developments, the specification depicted may vary to that in the version of this house type at Lethington Gardens. Some internal images contain upgrades to fixtures, fittings and appliances and these may not be included in the sale price. Dimensions taken at the position of the arrows. Please ask your Sales Consultant for the full details of the specification and pricing.

The particulars, prices, illustrations and plans in this brochure are intended to give a fair description of the properties but their accuracy is not guaranteed and they do not form part of any contract. Mactaggart & Mickel Homes reserve the right to alter prices, specifications and equipment as necessary.

