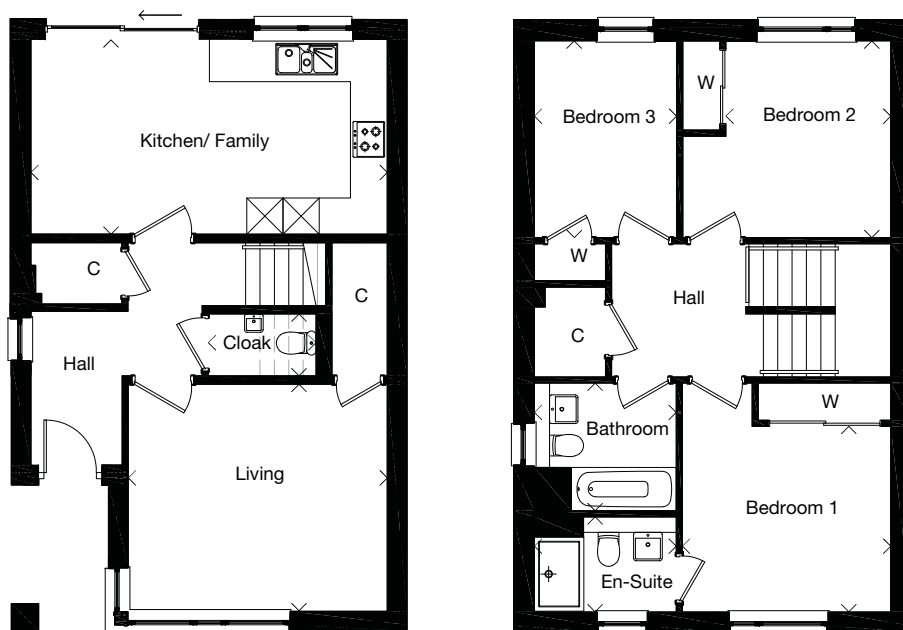


Plots 10, 11, 12, 15, 18, 19, 32

Dimensions taken at the position of the arrows.



GROUND FLOOR	mm	feet, inches
Living	4190 x 3660	13'9" x 12'0"
Cloak	1740 x 1000	5'9" x 3'3"
Kitchen / Family	5765 x 3140	18'11" x 10'4"

FIRST FLOOR	mm	feet, inches
Bedroom 1	3370 x 3000	11'1" x 9'10"
En-Suite	2295 x 1535	7'6" x 5'0"
Bathroom	2095 x 2065	6'10" x 6'9"
Bedroom 2	3180 x 2665	10'5" x 8'9"
Bedroom 3	2300 x 3180	7'7" x 10'5"

Dimensions taken at the position of the arrows.

Computer-generated image of a typical Mactaggart & Mickel house style at one of our developments, the specification depicted may vary to that in the version of this house type at Lethington Gardens. Some internal images contain upgrades to fixtures, fittings and appliances and these may not be included in the sale price. Dimensions taken at the position of the arrows. Please ask your Sales Consultant for the full details of the specification and pricing.

The particulars, prices, illustrations and plans in this brochure are intended to give a fair description of the properties but their accuracy is not guaranteed and they do not form part of any contract. Mactaggart & Mickel Homes reserve the right to alter prices, specifications and equipment as necessary.

