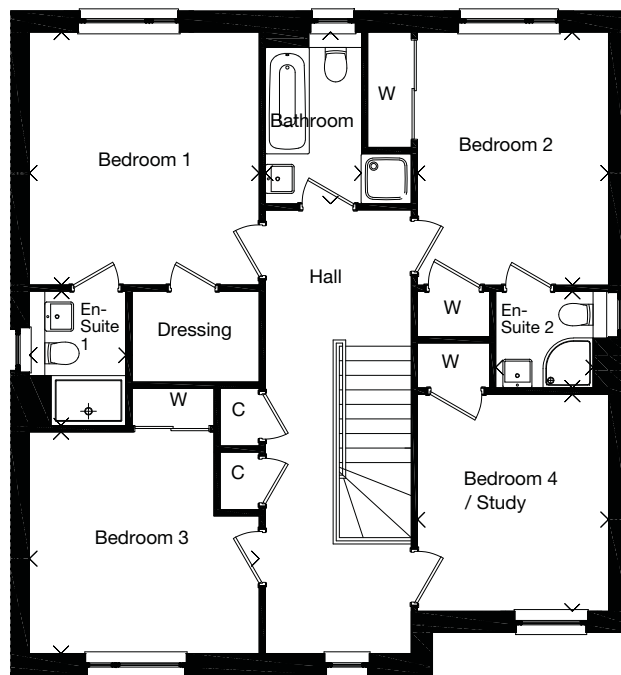
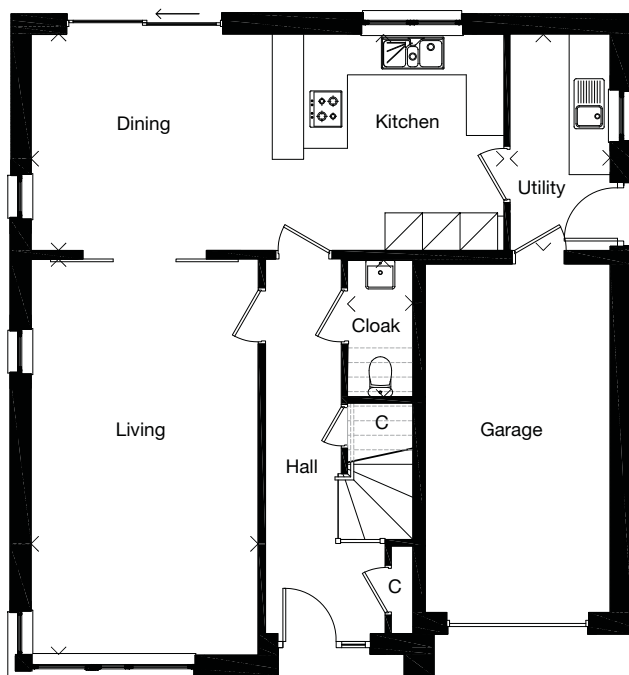


Plots 1, 13

Dimensions taken at the position of the arrows.



GROUND FLOOR	mm	feet, inches
Living	3625 x 6320	11'11" x 20'9"
Kitchen / Dining	7550 x 3450	24'9" x 11'4"
Utility	1600 x 3450	5'3" x 11'4"
Cloak	1025 x 2185	3'4" x 7'2"
FIRST FLOOR	mm	feet, inches
Bedroom 1	3670 x 4040	12'0" x 13'3"
En-Suite 1	1545 x 2145	5'1" x 7'0"
Bedroom 2	3050 x 4040	10'0" x 13'3"
En-suite 2	1555 x 1545	5'1" x 5'1"
Bedroom 3	3670 x 3540	12'0" x 11'7"
Bedroom 4 / Study	3050 x 3465	10'0" x 11'4"
Bathroom	1535 x 2740	5'0" x 9'0"

Computer-generated image of a typical Mactaggart & Mickel house style at one of our developments, the specification depicted may vary to that in the version of this house type at Lethington Gardens. Some internal images contain upgrades to fixtures, fittings and appliances and these may not be included in the sale price. Dimensions taken at the position of the arrows. Please ask your Sales Consultant for the full details of the specification and pricing.

The particulars, prices, illustrations and plans in this brochure are intended to give a fair description of the properties but their accuracy is not guaranteed and they do not form part of any contract. Mactaggart & Mickel Homes reserve the right to alter prices, specifications and equipment as necessary.

