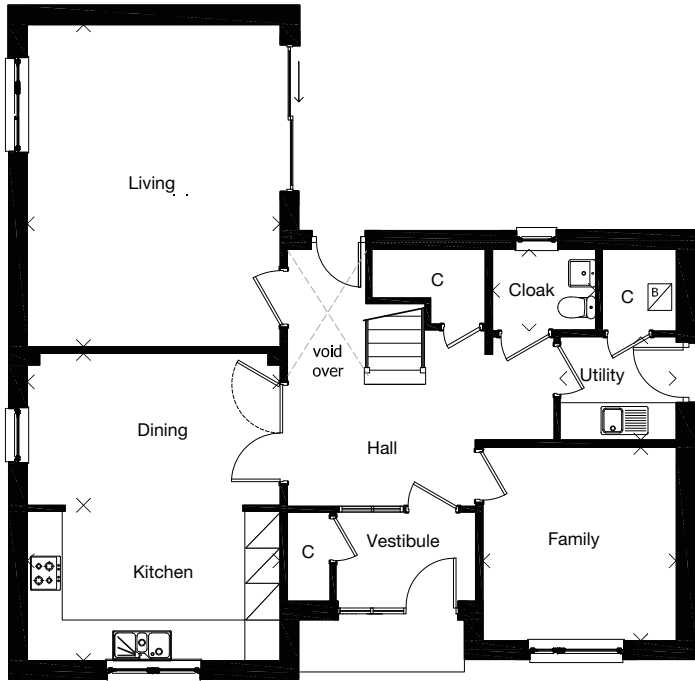


Plots 21, 24, 25, 28, 29

Dimensions taken at the position of the arrows.



GROUND FLOOR	mm	feet, inches
Living	4305 x 5480	14'0" x 18'0"
Dining	4305 x 2585	14'0" x 8'6"
Kitchen	4305 x 2645	14'0" x 8'8"
Utility	1980 x 1755	6'6" x 5'9"
Family	3295 x 3300	10'10" x 10'10"
Cloak	1750 x 1370	5'9" x 4'6"

FIRST FLOOR	mm	feet, inches
Bedroom 1	3610 x 3370	11'10" x 11'1"
En-Suite 1	1545 x 2335	5'1" x 7'8"
Bedroom 2	4305 x 2970	14'0" x 9'9"
En-Suite 2	1545 x 1850	5'1" x 6'1"
Bedroom 3	3315 x 3035	10'11" x 9'11"
Bedroom 4 / Study	3230 x 3035	10'7" x 9'11"
Bedroom 5	3155 x 2135	10'4" x 7'0"
Bathroom	1550 x 3585	5'1" x 11'9"

Computer-generated image of a typical Mactaggart & Mickel house style at one of our developments, the specification depicted may vary to that in the version of this house type at Lethington Gardens. Some internal images contain upgrades to fixtures, fittings and appliances and these may not be included in the sale price. Dimensions taken at the position of the arrows. Please ask your Sales Consultant for the full details of the specification and pricing.

The particulars, prices, illustrations and plans in this brochure are intended to give a fair description of the properties but their accuracy is not guaranteed and they do not form part of any contract. Mactaggart & Mickel Homes reserve the right to alter prices, specifications and equipment as necessary.

