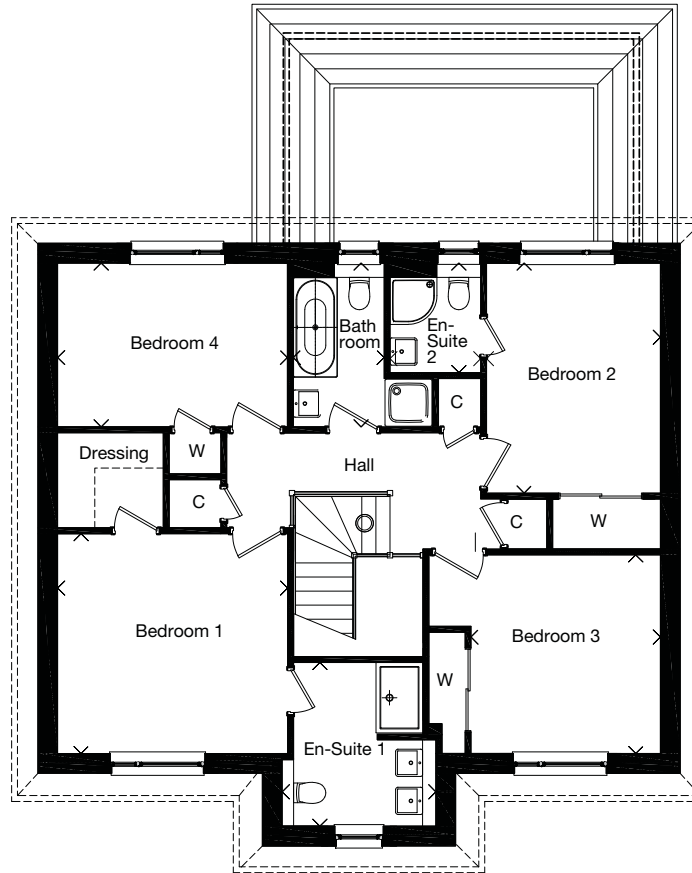
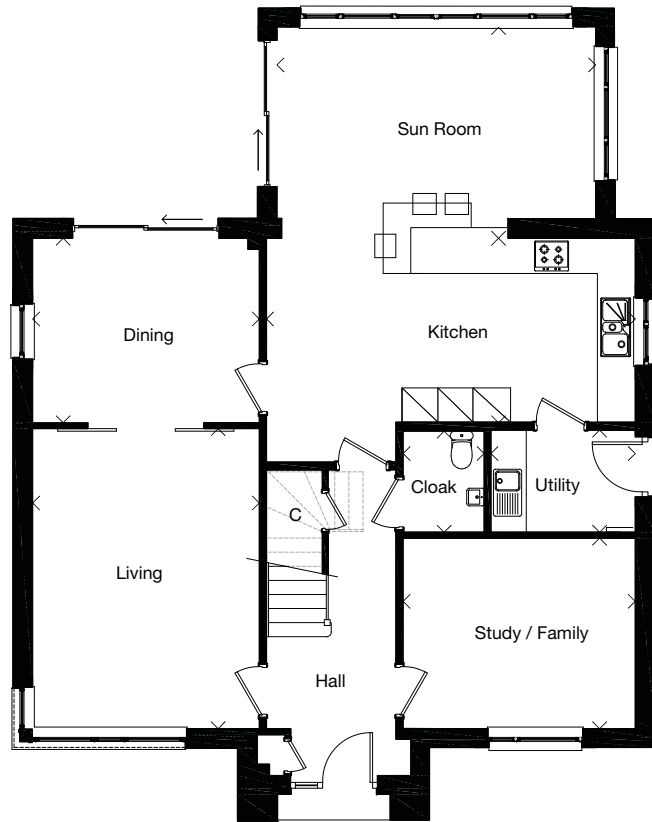


Plots 2, 4, 6

Dimensions taken at the position of the arrows.



GROUND FLOOR	mm	feet, inches
Living	3860 x 5110	12'8" x 16'9"
Dining	3860 x 3145	12'8" x 10'4"
Kitchen	6285 x 3135	20'7" x 10'3"
Sun Room	5430 x 3600	17'10" x 11'10"
Utility	2460 x 1740	8'1" x 5'9"
Cloak	1400 x 1740	8'1" x 5'9"
Study / Family	3955 x 3245	13'0" x 10'8"

FIRST FLOOR	mm	feet, inches
Bedroom 1	3920 x 3745	12'10" x 12'3"
En-suite 1	2620 x 2790	8'7" x 9'2"
Bedroom 2	2960 x 3915	9'9" x 12'10"
En-suite 2	1545 x 1865	5'1" x 6'1"
Bedroom 3	3230 x 3385	10'7" x 11'1"
Bedroom 4	3915 x 2790	12'10" x 9'2"
Bathroom	1550 x 2790	5'1" x 9'2"

Computer-generated image of a typical Mactaggart & Mickel house style at one of our developments, the specification depicted may vary to that in the version of this house type at Lethington Gardens. Some internal images contain upgrades to fixtures, fittings and appliances and these may not be included in the sale price. Dimensions taken at the position of the arrows. Please ask your Sales Consultant for the full details of the specification and pricing.

The particulars, prices, illustrations and plans in this brochure are intended to give a fair description of the properties but their accuracy is not guaranteed and they do not form part of any contract. Mactaggart & Mickel Homes reserve the right to alter prices, specifications and equipment as necessary.

