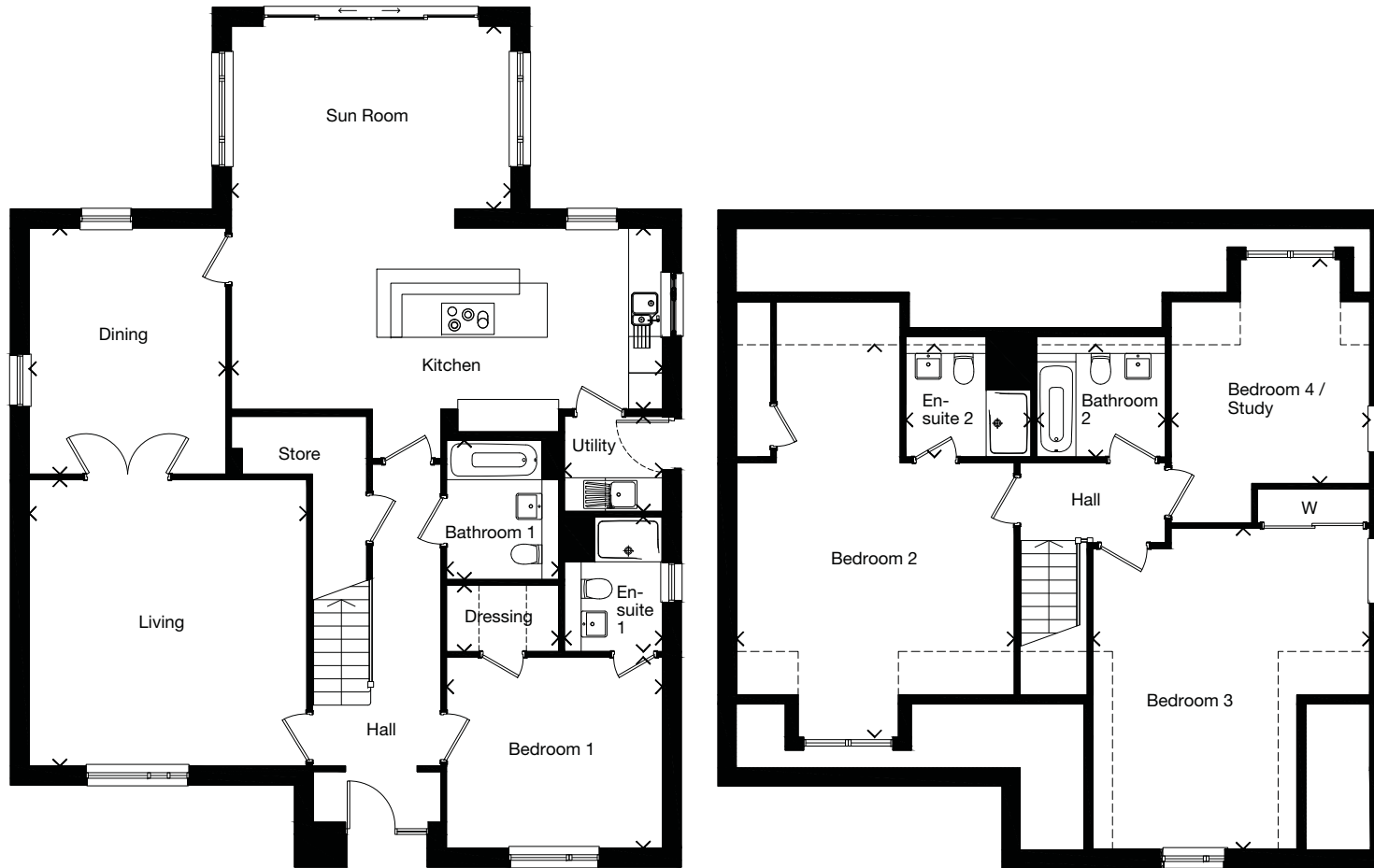


Plots 1, 5, 12, 15

Dimensions taken at the position of the arrows.



GROUND FLOOR	mm	feet, inches
Living	4944 x 5105	16'3" x 16'9"
Dining	3500 x 4388	11'6" x 14'5"
Kitchen	7680 x 3234	25'2" x 10'7"
Sun Room	4980 x 3263	16'4" x 10'8"
Bedroom 1	3846 x 3404	12'7" x 11'2"
En-suite 1	1746 x 2400	5'9" x 7'10"
Dressing Room	2000 x 1186	6'7" x 3'11"
Utility	1746 x 1693	5'9" x 5'7"
Bathroom 1	2000 x 2480	6'7" x 8'2"
FIRST FLOOR	mm	feet, inches
Bedroom 2	4942 x 6995	16'3" x 22'11"
En-suite 2	2232 x 2004	7'4" x 6'7"
Bedroom 3	4934 x 5719	16'2" x 18'9"
Bedroom 4 / Study	3539 x 3994	11'7" x 13'1"
Bathroom 2	2295 x 2004	7'6" x 6'7"

Computer-generated image of a typical Mactaggart & Mickel house style at one of our developments, the specification depicted may vary to that in the version of this house type at Buchanan Views. Some internal images contain upgrades to fixtures, fittings and appliances and these may not be included in the sale price. Dimensions taken at the position of the arrows. Please ask your Sales Consultant for the full details of the specification and pricing.

The particulars, prices, illustrations and plans in this brochure are intended to give a fair description of the properties but their accuracy is not guaranteed and they do not form part of any contract. Mactaggart & Mickel Homes reserve the right to alter prices, specifications and equipment as necessary.

